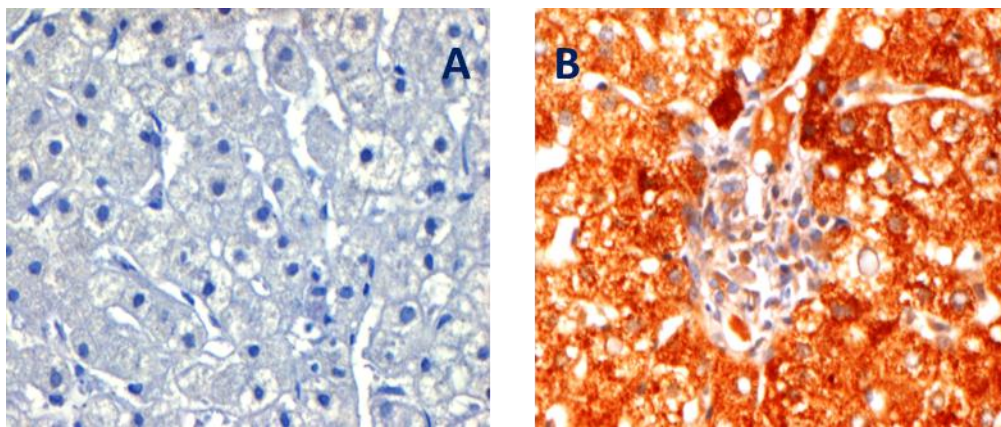
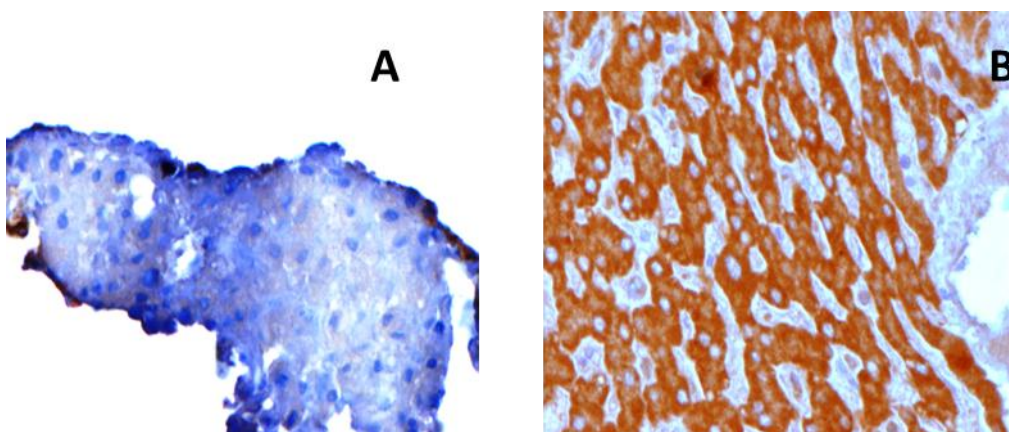


**Table 3. The Expression of LTR in studied groups**

Result of Immunohistochemistry		LTR Expression	P value
Patients with Chronic HCV infection	Positive	19 (76%)	< 0.001
	Negative	6 (24%)	
	Total	25 (100%)	
HCC	Positive	9 (90%)	< 0.001
	Negative	1 (10%)	
	Total	10 (100%)	
Control Group	Positive	0 (0%)	
	Negative	13 (100%)	
	Total	13 (100%)	



**Fig. 1. Immunohistochemistry for LT- $\alpha$  in liver section with chronic HCV infection section, stained by DAB chromogen and counter stained with heamatoxylin. A: Negative expression, B: LT- $\alpha$  positive expression (400X).**



**Fig. 2. Immunohistochemistry for LT- $\beta$  in hepatocellular carcinoma infected section, stained by DAB chromogen and counter stained with heamatoxylin. A: Negative expression, B: LT- $\beta$  positive expression (400X)**