

capsulated) while 4 isolates out of 6 (66.6%) were non-type-able. The results also showed that these 2 capsulated isolates of *H. influenzae*

were from CSF of patient with meningitis as shown in figure 2 and 3, respectively.

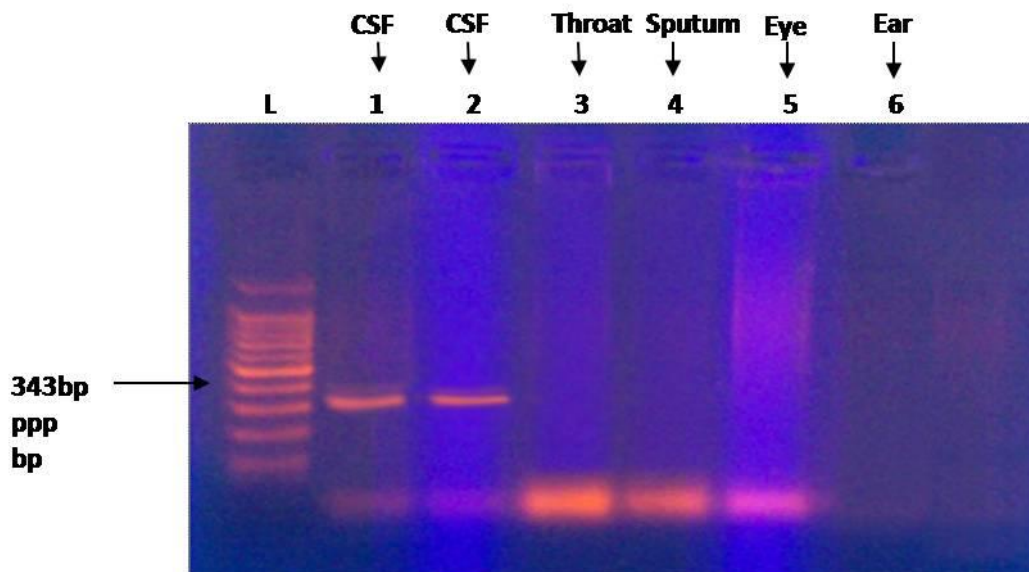


Fig. 2. Gel electrophoresis of PCR product of BexA gene. Lane of isolates numbered (1,2) were positive, where as isolates (3,4,5,6) were negative.

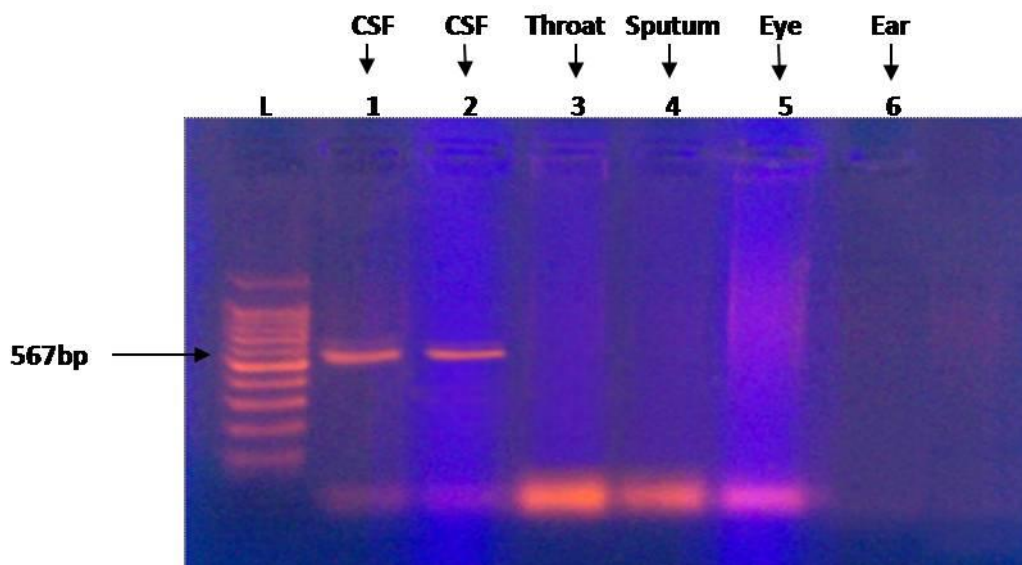


Fig. 3. Gel electrophoresis of PCR product of Bex B gene. Lane of isolates numbered (1,2) were positive, where as isolates (3,4,5,6) were negative.

The remaining 4 isolates 4-6 (66.6 %) give all (100%) positive result for OMP P2 which can be used as a genetic marker for detection of non-type-able one as in figure 4. From the two

capsulated one (50%) was of type b *H. influenzae* by using Hib and bex primers as in figures 5 and 6, respectively.