

Fig. 4. Gel electrophoresis of PCR product of *P2* gene. Lane of isolates numbered (3,4,5,6) were positive, where as isolates (1,2) were negative.

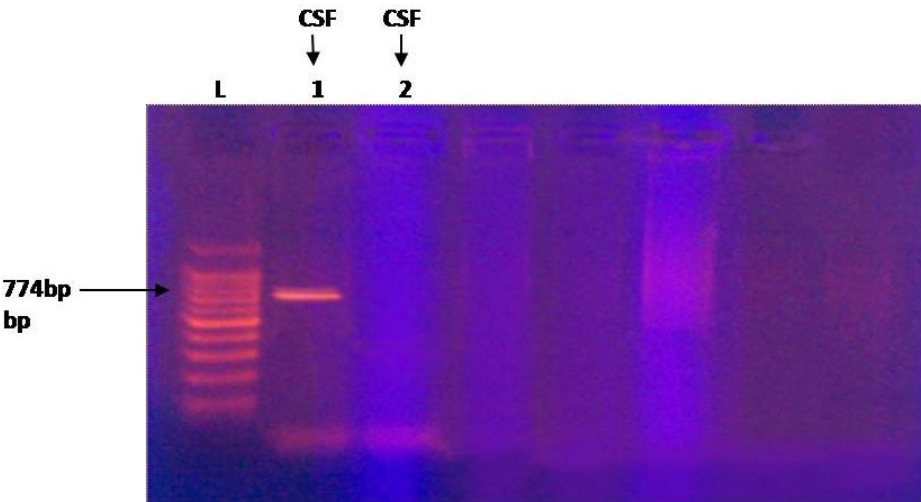


Fig. 5. Gel electrophoresis of PCR product of *hib* amplicon gene. Lane of isolate numbered (1) was

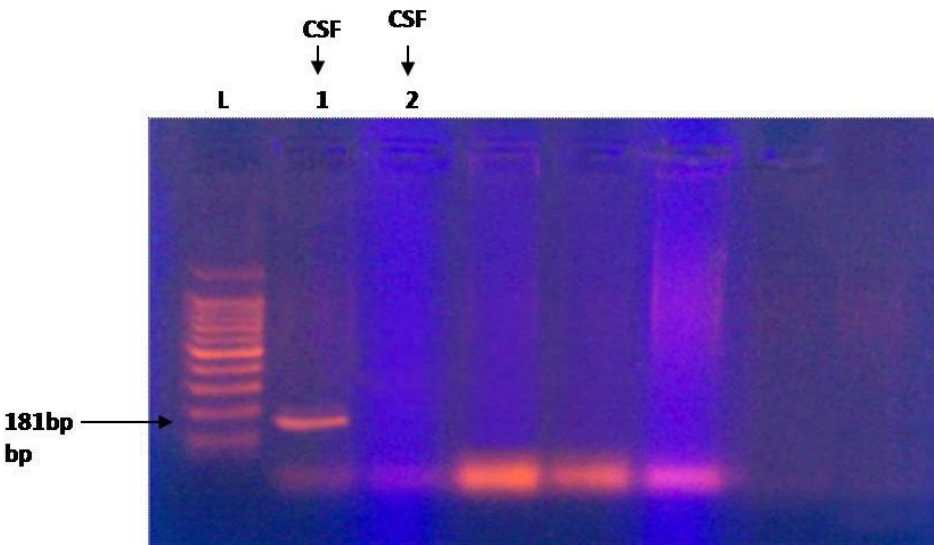


Fig. 6. Gel electrophoresis of PCR product of *bex* gene. Lane of isolate numbered (1) was positive