

MRI and MRA were the most useful imaging modalities in evaluation they were

performed in nine patients (Figures 2 and 3).

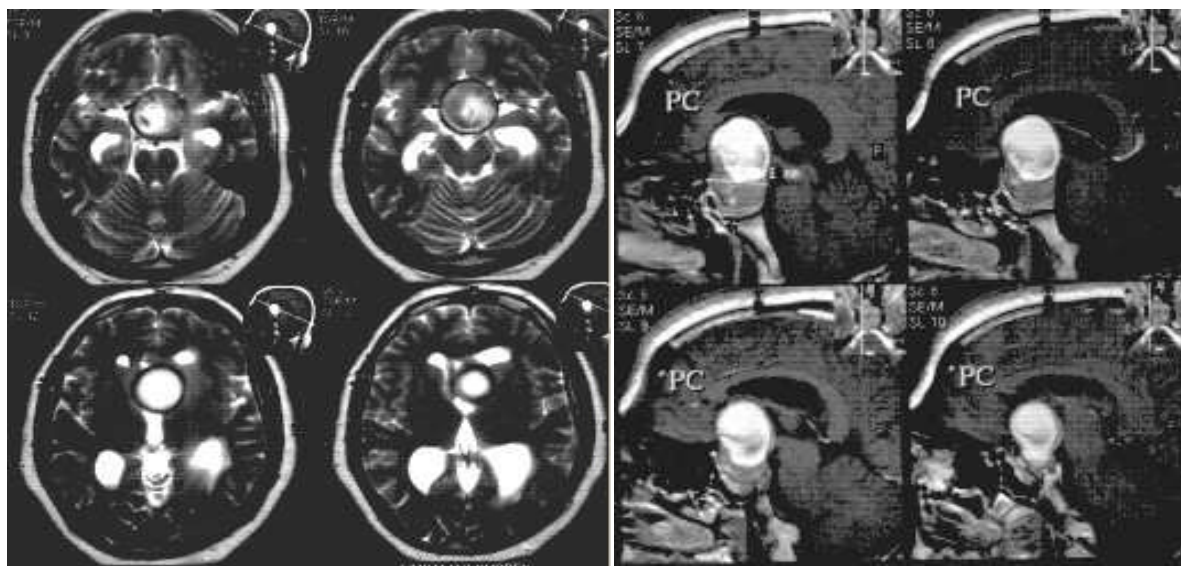


Figure 2: Pituitary adenoma, with suprasellar extension (MRI, Axial and sagittal sections)

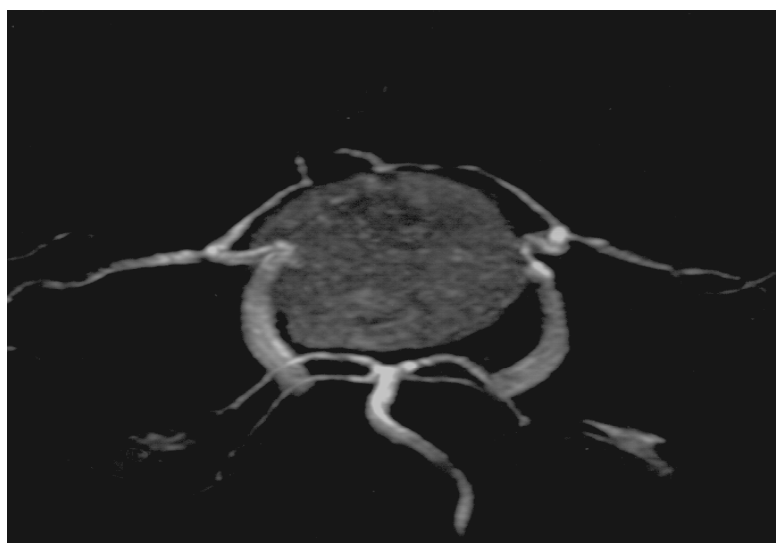


Figure 3: Pituitary adenoma (MRA)

Most of the adenomas were soft, non-cystic (Table 7). Chromophob adenoma was the most common (56.3%) followed by acidophilic adenomas (41.8%). Histologically

(90.9%) of pituitary adenomas were benign, while aggressive (invasive) pituitary adenoma was seen in (9.1%) (Table 8).