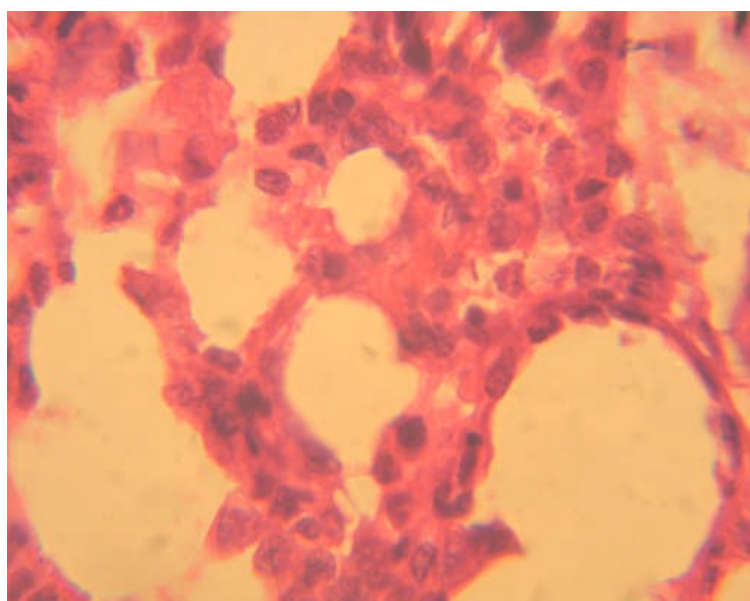


**Table1: Average widest pulmonary alveolar Macrophage's diameter and their nuclear diameter in  $\mu\text{m}$ , of adult rats; treated with dietary melatonin.**

<i>Daily dose of melatonin in <math>\mu\text{g/kg}</math> body wt</i>	<i>Average alveolar Macrophage's diameter (in <math>\mu\text{m}</math>)</i>	<i>Average nuclear diameter of alveolar Macrophage's (in <math>\mu\text{m}</math>)</i>
Control	16.3 $\pm$ 1.6	9.7 $\pm$ 1.4
125	19.1 $\pm$ 1.8*	11.2 $\pm$ 1.8†
250	29.7 $\pm$ 2.9**	15.1 $\pm$ 2.7**
500	44.3 $\pm$ 5.1**	18.9 $\pm$ 4.2**
750	91.4 $\pm$ 11.4**	(multiple) 21.3 $\pm$ 7.1††
1000	168.5 $\pm$ 21.6**	(multiple) 24.1 $\pm$ 9.1‡

-Data were expressed as mean  $\pm$  SD.

(\* P<0.004; \*\*P<0.0001; † P<0.03; †† P<0.008; ‡ P<0.006).



**Figure 1: Lung tissue in the control adult rat. H&E, X400**