

Figure 2: Epididymidis of adult rat, treated with 250µg/kg dose, epididymal wall thickness increased, lumen dilated and spermatozoal Clumps became abundant than that of control, X 200, H&E.

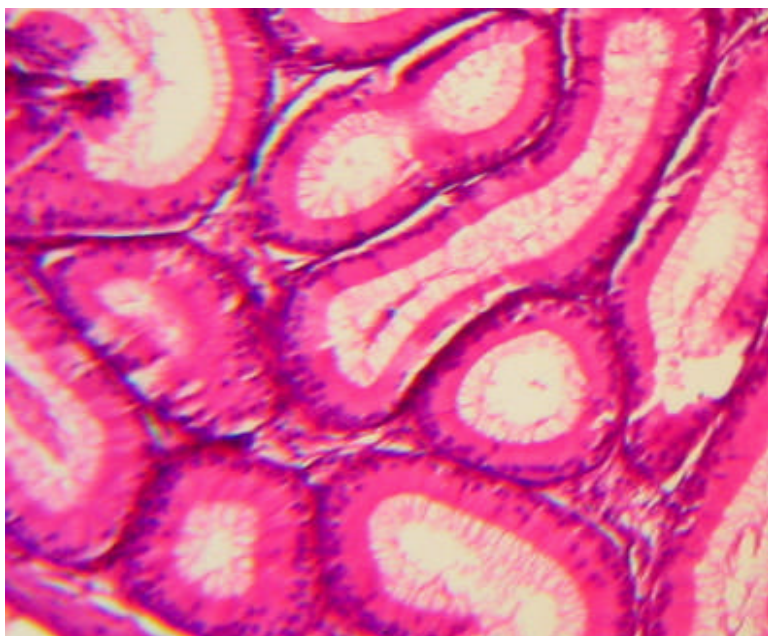


Figure 3: Epididymidis of adult rat treated with 500µg/kg dose, epididymal wall thickness increased, lumen became smaller and spermatozoal clumps diminished than that of control, X 200, H&E.