

monoclonal antibody for HCMV early non-structural protein of 68 KDa (BioGenex, USA) in a dilution of 1:100, refer to the immunohistochemistry procedure in reference <sup>(11)</sup>.

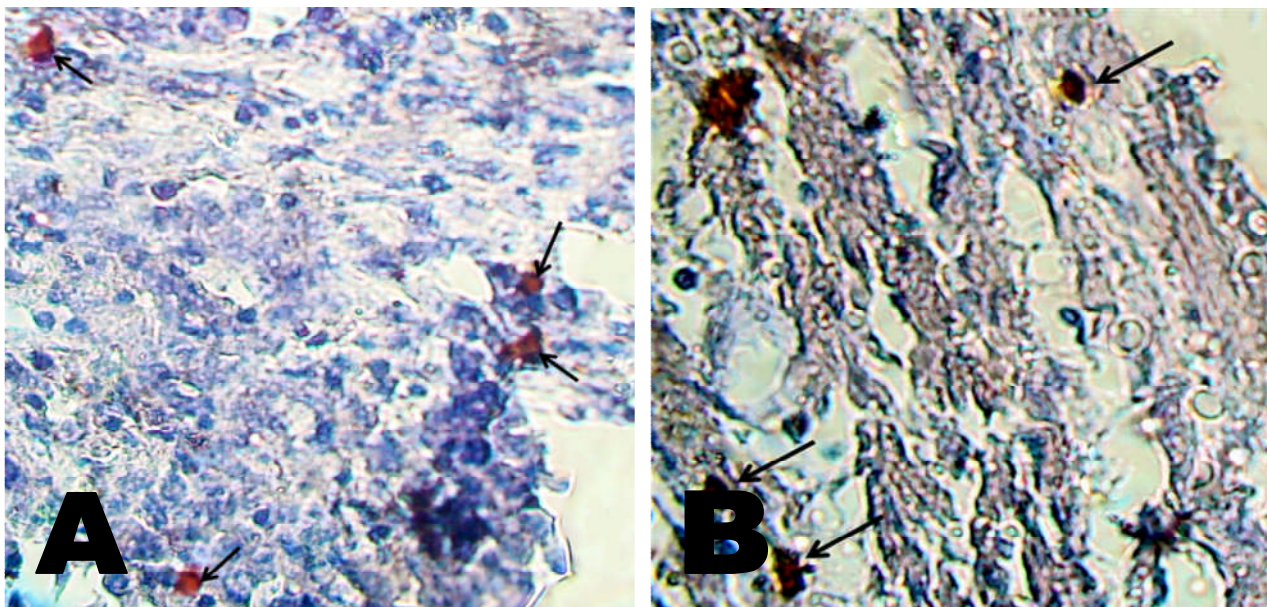
### **Results**

HCMV early protein was detected in colorectal tumor cells in

five out of 32 cases (15.6%) (Table 1), with negative normal tumor margin in all of these cases, and none of the 8 colorectal hyperplastic polyps showed positivity for the viral early protein. HCMV positive cells showed dark brown nuclear staining pattern (Figure 1).

**Table 1: HCMV early protein positive colorectal cancer cases**

Case no.	Tumor Grade	Tumor Stage	Tumor Type	Location	Lymph nodes involvement
1	II	C	Well differentiated	Recto-sigmoid	Positive
2	III	C	Poorly differentiated	Recto-sigmoid	Positive
3	II	B	Moderately differentiated	Colon	Negative
4	II	D	Moderately differentiated	Rectum	Negative
5	II	C	Moderately differentiated	Rectum	positive



**Figure 1: Detection of HCMV early protein by immunohistochemistry in Colorectal Adenocarcinoma.** Immunostaining of HCMV by DAB chromogen (dark brown nuclear staining) counterstained with Mayer's hematoxylin. (A) Poorly differentiated, grade III, stage C, colorectal adenocarcinoma show tumor cells positive for the virus early protein. (B) Well differentiated, grade II, stage C, colorectal adenocarcinoma show tumor cells positive for the virus early protein. Magnification power of A and B (X400).