

*Figure-1 ; Gel image showing PCR products of two markers representing the AZFa and AZFb regions,
Line - 1: Female DNA sample without products,
Lines 2,3,4,5 and 6 azoospermic samples with normal AZFa and AZFb.*

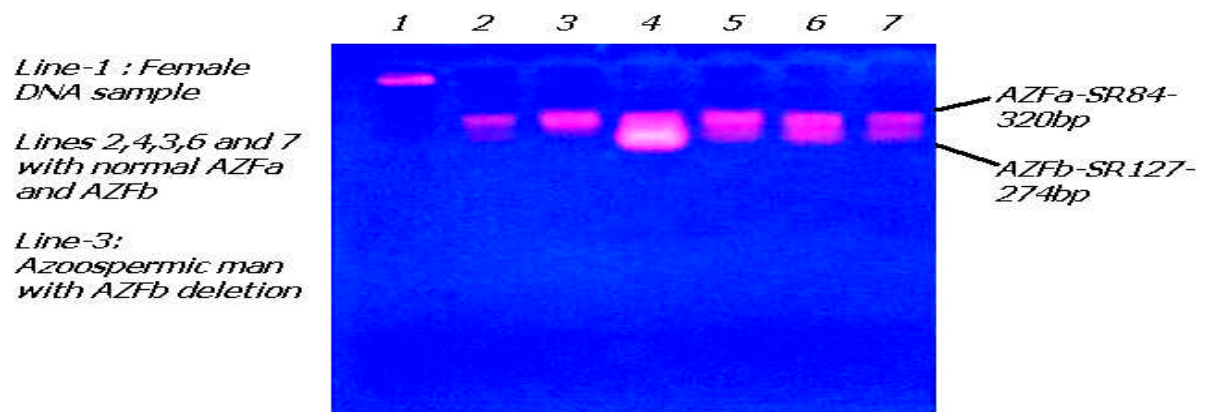


Figure-2 ; PCR duplex of AZFa and AZFb products in azoospermic men.