

erythrodermic psoriasis, generalized pustular psoriasis (GPP), psoriatic arthritis and diffuse plaque psoriasis) (Tables 3, 4 and 5).

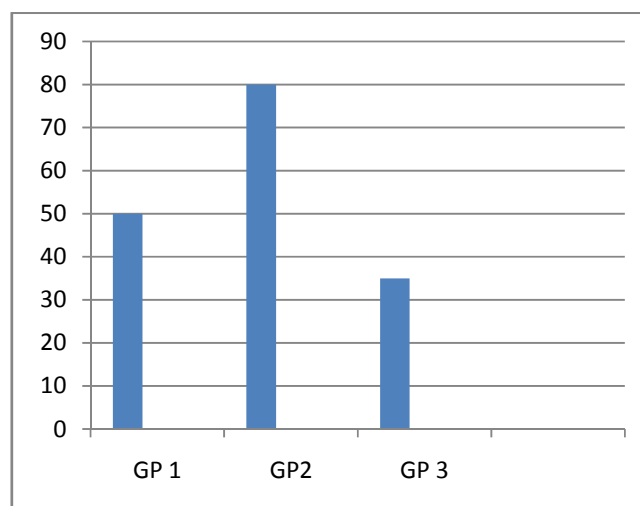
**Table 1: The age and the sex of the patients**

Age (Years)	L.P	M	F	Psoriasis	M	F	Control	M	F	Total	%
10 - < 20	4	2	2	5	3	2	3	2	1	12	10
20 - < 30	6	4	2	7	4	3	10	5	5	23	19.2
30 - < 40	14	8	6	13	8	5	11	6	5	38	31.7
40 - < 50	10	5	5	9	5	4	11	6	5	30	25
50 - < 60	6	3	3	6	4	2	5	3	2	17	14.1
Total	40	22	18	40	24	16	40	22	18	120	100
Mean age	36.7 ± 10.4			35.7 ± 10.9			35.4 ± 10.8			35.7 ± 10.8	

**Table 2: The decrease in selenium level in relation to the three groups**

Group	Decrease in selenium level (40-70mcg/l)	%	Normal selenium level (≥ 80mcg/l)	%	p-value	Chi-square
1 <sup>st</sup> group	20	50	20	50	0.2581	1.279
2 <sup>nd</sup> group	32	80	8	20	0.0001*	14.783
3 <sup>rd</sup> group	14	35	26	65	-	-

\* Values considered statistically significant when P - value < 0.05 (Compare both the 1<sup>st</sup> and the 2<sup>nd</sup> group with the 3<sup>rd</sup> group).



**Figure 1: The decrease in selenium level in relation to the three groups**