

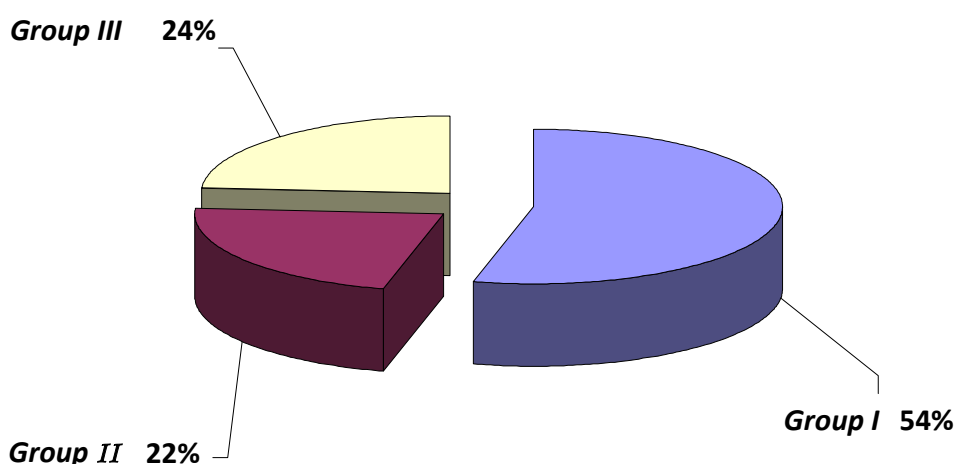
CRP level in those with culture negative (i.e. group II and III) was ( $3\pm2.9$ ).

The average CRP level after adequate treatment was ( $3.2\pm2.9$ ) ( $p$  value < 0.001). There was an improvement in their measured FEV1 from  $0.78\pm0.2$  before treatment to a mean of  $1.4\pm0.2$  after treatment ( $p$  value < 0.001).

The patient characteristics and their relationship to CRP were shown in table 1.

The peak level and fall in CRP were both correlated with the corresponding peripheral blood smear white cell count ( $r=0.57$ ,  $p$  value < 0.001) as in Figure 2.

Also the correlation Coefficient between CRP and FEV1 was ( $r= -0.45$ ,  $p$  value < 0.001) as shown in Figure 3.



**Figure 1: Groups of the patients in the study**

Group I –Those with elevated CRP and culture positive (54%)

Group II- Those with deviated CRP and culture negative (22%)

Group III- Those with normal CRP and culture negative (24%)

**Table 1: Characteristics of patients and their relationship to CRP**

Characteristic of patients	Elevated CRP N=38	Normal CRP N=12	$p$ value
Age (Mean $\pm$ SD)	63 $\pm$ 6.14	68 $\pm$ 5.8	0.359
Sex ♂/♀	30/8	10/2	0.741
FEV1 (Mean $\pm$ SD)	0.739 $\pm$ 0.20	0.89 $\pm$ 0.18	0.029
FEV1-5d (Mean $\pm$ SD)	1.423 $\pm$ 0.23	1.32 $\pm$ 0.18	0.193
WBC (Mean $\pm$ SD)	12.77 $\pm$ 1.86	8.99 $\pm$ 1.12	0.0001
WBC-5d (Mean $\pm$ SD)	8.27 $\pm$ 1.86	4.88 $\pm$ 0.68	0.0001
Culture P/N	27/11	0/12	0.0001